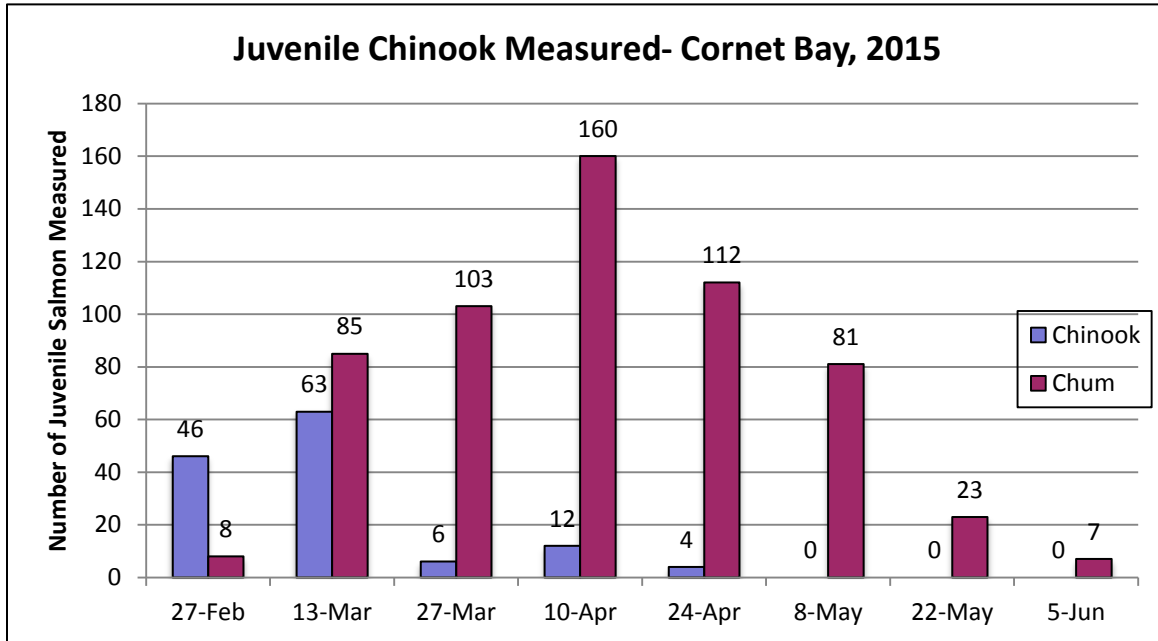
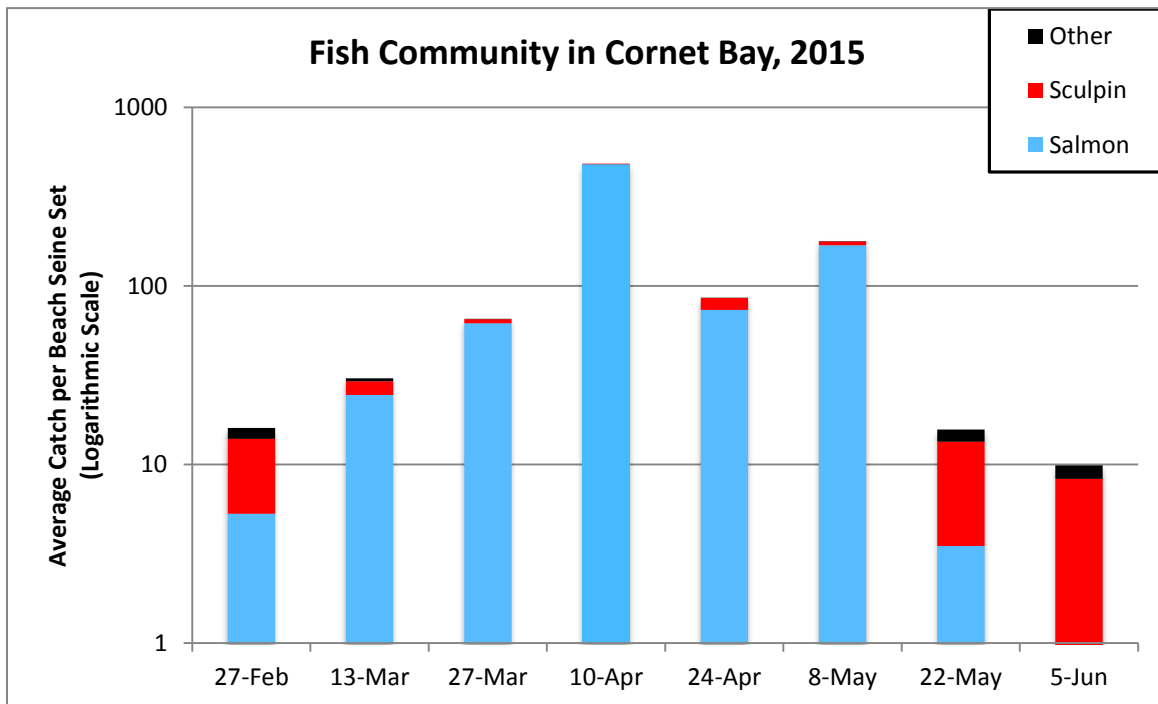


MRC Cornet Bay Seining Report – October 20, 2015

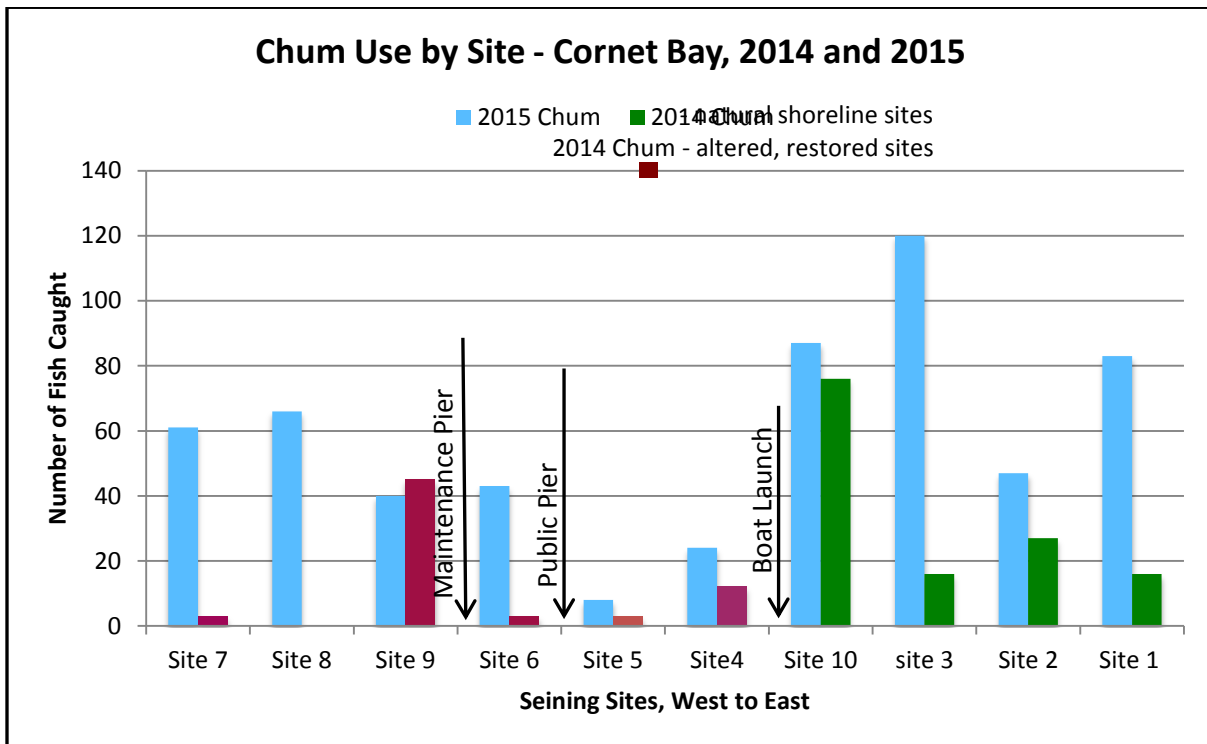
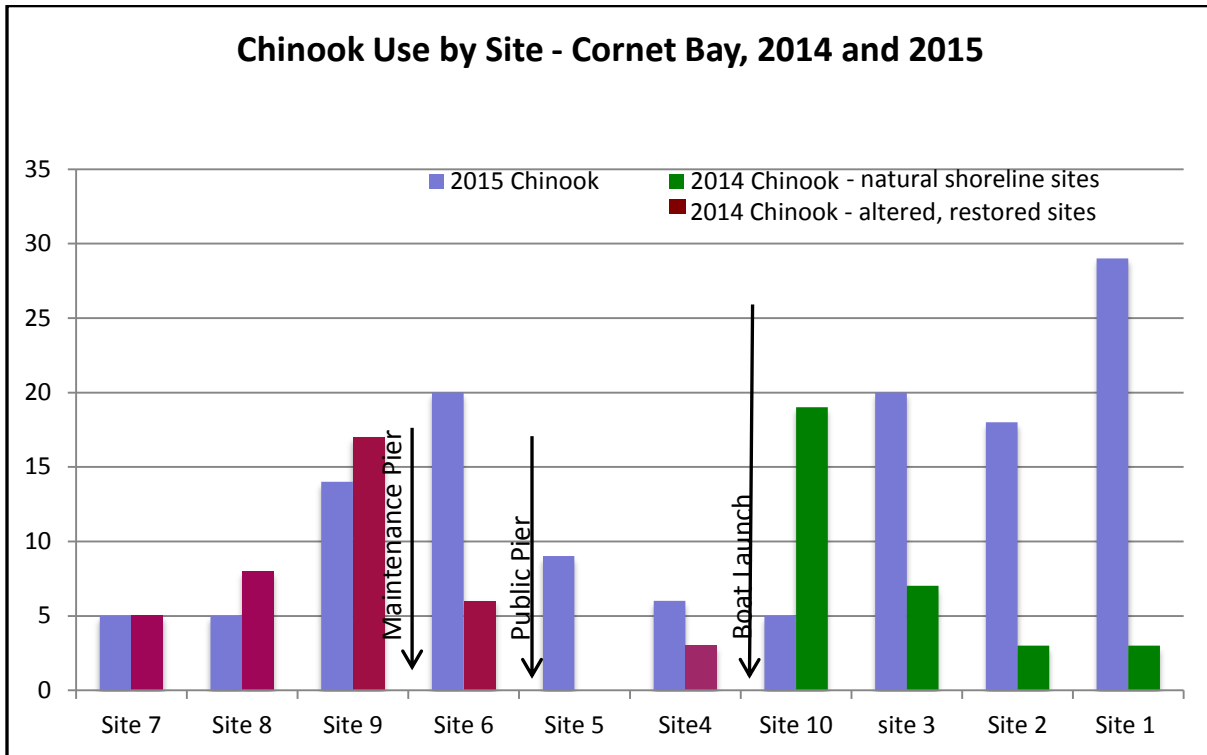


Number of juvenile salmon measured during fish sampling at Cornet Bay in 2015.



Fish community and relative abundance in Cornet Bay, 2015.

Numbers of Chinook and Chum salmon caught in 2014 and 2015 at each sampling site. Salmon caught in 2014 at sites located along the natural shoreline are shown in green. Salmon caught along altered, recently restored sites of the project area shoreline are shown in red.



Total fish catch (mean catch per beach seine set in parentheses) by fish species at Cornet Bay sites in 2014.

<i>Fish species</i>	<i>Nearshore Catch</i>	
<u>Juvenile salmon:</u>		
Pink salmon <i>Oncorhynchus gorbuscha</i>	19,883	(220.92)
Chum salmon <i>Oncorhynchus keta</i>	201	(2.23)
Chinook salmon <i>Oncorhynchus tshawytscha</i>	71	(0.79)
Coho salmon <i>Oncorhynchus kitsutch</i>	11	(0.12)
Total juvenile salmon	20,166	(224.07)
<u>Sculpin species:</u>		
Unidentified sculpin	1,435	(15.94)
Total		1,435
<u>Flatfish species:</u>		
Unidentified flatfish	242	(0.29)
Total		242
<u>Forage fish species:</u>		
Surf smelt <i>Hypomesus pretiosus</i>	27	(0.30)
Pacific sandlance <i>Ammodytes hexapterus</i>	3	(0.03)
Total Forage Fish:	30	(0.33)
<u>Gunnel species:</u>		
Unidentified gunnel	65	(0.72)
Total		65
<u>Other nearshore or estuarine fish species:</u>		
Unidentified greenling	17	(0.19)
Snake prickleback <i>Lumpenus sagitta</i>	44	(0.49)
Threespine stickleback <i>Gasterosteus aculeatus</i>	19	(0.21)
Shiner perch <i>Cymatogaster aggregate</i>	58	(0.63)
Lingcod <i>Ophiodon elongates</i>	3	(0.03)
Dwarf wrymouth <i>Cryptacanthodes aleutensis</i>	1	(0.01)
Total catch	22,080	(245.33)

Total fish catch (mean catch per beach seine set in parentheses) by fish species at Cornet Bay sites in 2015.

<i>Fish species</i>	<i>Nearshore catch</i>	
<u>Juvenile salmonids:</u>		
Chinook salmon <i>Oncorhynchus tshawytscha</i>	160	(1.4)
Chum salmon <i>Oncorhynchus keta</i>	8,025	(102.9)
Coho Salmon <i>Oncorhynchus kisutch</i>	1	(<0.1)
Total juvenile salmonids:	8,186	
<u>Sculpin species:</u>		
Unspecified sculpin	577	(7.4)
<u>Flatfish species:</u>		
Unspecified flatfish	6	(<0.1)
Surf smelt (P.L.) <i>Hypomesus pretiosus</i>	28	(0.4)
<u>Gunnel species</u>		
Unspecified gunnel	20	(0.3)
<u>Other nearshore or estuarine fish species:</u>		
Threespine stickleback <i>Gasterosteus aculeatus</i>	10	(0.13)
Shiner perch <i>Cymatogaster aggregata</i>	17	(0.22)
Bay pipefish <i>Syngnathus leptorhynchus</i>	1	(<0.1)
All fish	8,845	(112)

2009-2015 beach seining at Cornet Bay – salmonid species.

<i>Year</i>	<i>No. of days</i>	<i>No. of sets</i>	<i>Total catch- all fish species</i>	<i>Salmonid Species:</i>					<i>% catch salmonid</i>
				<i>Chinook</i>	<i>Chum</i>	<i>Pink</i>	<i>Coho</i>	<i>Cutthroat trout</i>	
2009	7	65	6,877	2	5,058	0	0	0	74%
2010	10	99	17,152	102	396	15,893	0	0	95%
2011	8	80	8,260	31	7,625	0	0	1	93%
2012	6	60	50,596	139	778	49,029	38	0	97%
2013	9	90	15,583	71	14,114	0	2	2	91%
2014	9	90	22,080	71	201	19,883	11	0	91%
2015	8	79	8,845	160	8,025	0	1	0	92%

Cornet Bay Average Water Temperature
Initial Sampling Date

<i>Year</i>	<i>Av. temp</i>	<i>Date</i>
2009	5.9 C(42.6F)	March 10
2010	8.5 C(47.3F)	March 5
2011	7.6 C(45.7F)	Feb 21
2012	7.2 C(45.0F)	March 9
2013	7.8 C(46F)	Feb 15
2014	7.1 C(44.8F)	Feb 21
2015	9.3 C(48.7F)	Feb 27